

### Adjusting the Amplifier's Absolute Gain

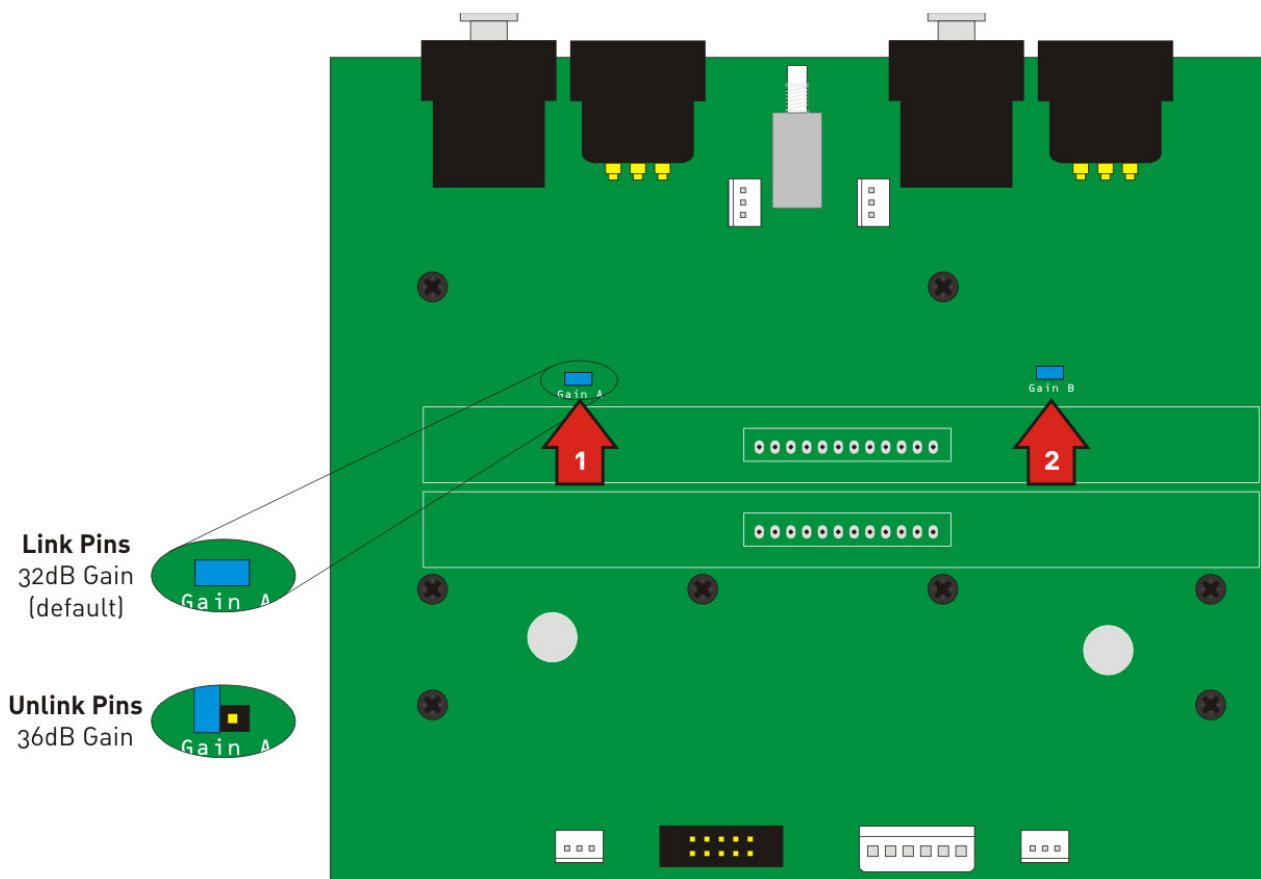
The voltage gain of the amplifier can be selected to be either +32dB (standard) or +36dB to match system sensitivity as required. This is achieved by setting links on the input board internally.

\*This applies to T2000 amplifiers from serial number 8102570 onwards – earlier serial numbers of T2000 amplifiers have a fixed gain of +32dB.

### SAFETY WARNING

Removing the lid will expose you to potentially dangerous voltages!  
Disconnect the amplifier from the mains supply and do not touch any heatsinks as they may still be at a high potential!

After removing the lid and with the rear panel facing away from you, locate the input circuit board as shown below – it is attached to the input XLR connectors. Find the two sets of links as marked by the arrows, and move them as shown to set the gain as required. Number 1 adjusts channel A's gain, and number 2 adjusts channel B's gain.



When selecting the 36dB gain position, we recommend fitting the jumper link back onto one of the individual pins for storage, in case the gain has to be changed back at any stage.